

Automatic License Plate Recognition

Manage parking, optimize traffic flow and detect vehicles of interest, even when you aren't looking.

The AutoVu™ automatic license plate recognition (ALPR) system automates license plate reading and identification, making it easier for law enforcement and for municipal and commercial organizations to locate vehicles of interest and enforce parking restrictions. Designed for both fixed and mobile installations, the AutoVu system is ideal for a variety of applications and entities, including law enforcement, municipal, and commercial organizations.



Know who's coming and going

Identify a vehicle entering a parking lot as soon as it arrives, then see how long it's been there – and whether or not it should still be there. From there, your operators can see where most people are parked illegally, and dispatch officers more effectively.



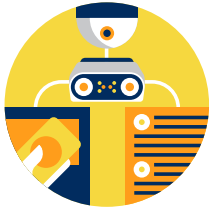
Control and share your information

Take control over who can access license plate data, both inside and outside your business. Using a built-in feature called Federation™, you can share license plates as you read them with partners and public safety agencies, and retract access at any time.



Improve your awareness

Tie footage directly from ALPR cameras or nearby surveillance cameras to give context to license plate reads and access control events. Associated video heightens security, increases efficiency, and speeds up investigations.



A unified response

Unify your access control and surveillance systems with AutoVu, allowing you to act on triggers and alarms across your entire system. Modify the behavior of your entire system by triggering a change in the threat level as soon as a vehicle of interest is detected.



Advanced reporting tools

Accelerate law-enforcement investigations by tracking vehicles breaking the speed limit or driving in the wrong direction when fleeing crime scenes. Plot sightings of vehicles of interest across your jurisdiction, and rapidly identify suspects with ALPR reporting.



Illuminating data

Act on data to gain a better understanding of your operations, plan for changes to your facilities – like building new parking – or associate parking duration with the quality of your retail outlet by seeing how long people are staying.

APPLICATIONS/ENTITIES

- Locate vehicles of interest
- Enforce parking restrictions
- Know who is in your facility
- Optimize traffic flow
- Law Enforcement
- Municipalities
- Education Campuses
- Healthcare Campuses
- Commercial Organizations

ALPR DEVICES

AutoVu™ SharpV

- Suitable for Fixed applications
- Monitor Entrances & Exits
- Capture license plates at high-speeds
- Simultaneously read license plates and stream high-resolution contextual color video
- Simple Deployment
- Versatile & Accurate

AutoVu™ SharpX

- High Resolution Captures
- Designed for Mobile ALPR Applications
- High read rates for both Mobile or Fixed deployments
- Up to 4 cameras on the same processing unit
- Designed for the most demanding situations
- Can compare scanned vehicles to lists of wanted vehicles, parking permit owners or employees, and send automatic notifications

SECURITY CENTER AUTOVU

- AutoVu is one of the core systems of Security Center, our security platform
- Unify plate reads from ALPR devices, surveillance cameras, and access control events in a single system

Do even more with Security Center

AutoVu, along with video surveillance and access control – as well as optional modules and built-in key features – it forms a unified system that offers enhanced intelligence, security, and operations.

SharpV

Automatic License Plate Recognition Device



The Genetec AutoVu™ SharpV is a specialized, all-in-one automatic license plate recognition (ALPR) camera designed to simplify deployments from specification through installation. Versatile and accurate, the SharpV is suited for fixed ALPR installations, such as monitoring entries and exits or capturing license plates at high-speeds on city-streets and highways.

The SharpV is ideally suited for a range of applications, from managing off-street parking lots and facilities to covering major city access points for wanted vehicles. The SharpV is also capable of simultaneously streaming ALPR and video data to Security Center, the Genetec security platform, where it can be unified with plate reads from mobile ALPR vehicles, surveillance camera streams and access control events in a single system.

Benefits

See more – Equipped with high-resolution ALPR and context cameras as well as on-board illumination, the SharpV covers a wide field-of-view and provides high-quality images and video, day or night.

Intelligence at the Edge – With processing on-board, the SharpV brings ALPR intelligence to the edge of your system. Since only plate read data needs to be transferred over the network, this means decreased data load on the network and server as all the image processing and analysis is done in the unit. The cameras are not dependent on the server, hence providing uninterrupted coverage even when connectivity goes down.

Unify on a Single Platform – The SharpV can be enrolled within Security Center as a surveillance camera for streaming and recording video. On-board I/Os can be used to trigger reads based on sensors to increase capture rates or open gates based on credentials associated to the plates.

Simplify Specification and Installation – The SharpV is built to facilitate deployment. As a varifocal PoE+ device, the reading distance, magnification and cabling are easily adjustable on site, reducing system design and specification effort. Meanwhile, the modern HTML5 web portal simplifies configurations and maintenance.

Features

On-board ALPR processing ensures performance and scalability

Varifocal lenses ease specification and design

Power over Ethernet Plus (PoE+) enabled to simplify deployment

IP67-rated enclosure allows for operation in extreme weather conditions and harsh environments

Built-in illumination for around-the-clock operation

Simultaneously read license plates and stream high-resolution contextual color video

On-board I/Os for integration to induction loops or gates

AutoVu™ SharpX

High-Resolution Automatic License Plate Recognition Camera

The SharpX is an IP-based automatic license plate recognition (ALPR) camera of the AutoVu system. Designed for the most demanding situations, the SharpX provides high license plate capture and read rates in both mobile and fixed deployments. The SharpX helps public safety agencies and private organizations locate vehicles of interest, monitor vehicles entering and exiting their premises and enforce parking bylaws.

Combined with AutoVu robust feature set, the SharpX can compare scanned vehicles to lists of wanted vehicles, parking permit owners or employees, and automatically notify operators of situations requiring their intervention.

Get More from Your ALPR System

Unsurpassed Reading Accuracy – The AutoVu SharpX uses a progressive scan sensor with 1024 × 946 (XGA) resolution to capture license plate images for analysis. This sensor provides an image resolution two to three times higher than most solutions found on the market today, ensuring better readability in different cases such as bad weather, dirty or obstructed plates, difficult angles, and reads across three lanes in mobile applications.

Analyse Vehicle Behavior and Characteristics – The SharpX provides more than license plate numbers. Advanced AutoVu analytics can identify a license plate's state or country of issuance as well as vehicle make. AutoVu also analyzes the behavior of scanned vehicles, calculating their speed and direction of travel with a single camera. The SharpX enhances situational awareness and unlocks new insights into vehicle conduct on monitored installations and roads.

Unified with Video Surveillance and Access Control – When unified with video surveillance and access control systems within Genetec Security Center platform, AutoVu SharpX cameras can be leveraged as video surveillance units, in addition to reading license plates, increasing situational awareness for operators.



Features

Up to 4 high-resolution ALPR cameras on the same processing unit

Reads license plates 24 hours a day and in any environmental conditions with built-in illumination

Designed for mobile ALPR applications

Captures license plates on vehicle travelling at speeds over 220 MPH (355 km/h)

Identifies vehicle make and license plate state or country of origin alongside ALPR reads

Streams live video to Genetec Security Center unified security platform

Supports international plate reading



**Life Safety
MADE SIMPLE™**

888-641-0100 | keystonefire.com